

AUSTRALIAN RULES STADIUMS - AUSTRALIA

ADELAIDE

CAPACITY : 53,583

CONSTRUCTED : 1871



Adelaide is used for regular Australian football matches, by one of the top teams in the AFL.
The Adelaide Oval hosted the 2003 Rugby Union World Cup, football, but is most famous for cricket tests.



[PLAY STADIUM FLYBY](#)

AUSTRALIAN RULES STADIUMS - AUSTRALIA

ADELAIDE PORT

CAPACITY : 53,583

CONSTRUCTED : 1871



Adelaide Port is used for regular Australian football matches, by one of the top teams in the AFL.
The Adelaide Oval hosted the 2003 Rugby Union World Cup, football, but is most famous for cricket tests.



[PLAY STADIUM FLYBY](#)

AUSTRALIAN RULES STADIUMS - AUSTRALIA

BRISBANE EAST

CAPACITY : 42,000

CONSTRUCTED : 1895



Brisbane East is used for regular Australian Football matches, by one of the top teams in the AFL.
The Gabba Stadium has hosted athletics, rugby league, rugby union but is most famous for cricket tests.



[PLAY STADIUM FLYBY](#)

AUSTRALIAN RULES STADIUMS - AUSTRALIA

BRISBANE WEST

CAPACITY : 42,000

CONSTRUCTED : 1895



Brisbane West is used for regular Australian Football matches, by one of the top teams in the AFL.
The Gabba Stadium has hosted athletics, rugby league, rugby union but is most famous for cricket tests.



[PLAY STADIUM FLYBY](#)

AUSTRALIAN RULES STADIUMS - AUSTRALIA

MELBOURNE CENTRE

CAPACITY : 100,021

CONSTRUCTED : 1853



Melbourne Centre is used for regular Australian football matches, by one of the top teams in the AFL.
The Melbourne Cricket Ground is regularly used for International cricket tests, was used for the 1956 Olympics.



[PLAY STADIUM FLYBY](#)

AUSTRALIAN RULES STADIUMS - AUSTRALIA

MELBOURNE EAST

CAPACITY : 100,021

CONSTRUCTED : 1853



Melbourne East is used for regular Australian football matches, by one of the top teams in the AFL.
The Melbourne Cricket Ground is regularly used for International cricket tests, was used for the 1956 Olympics.



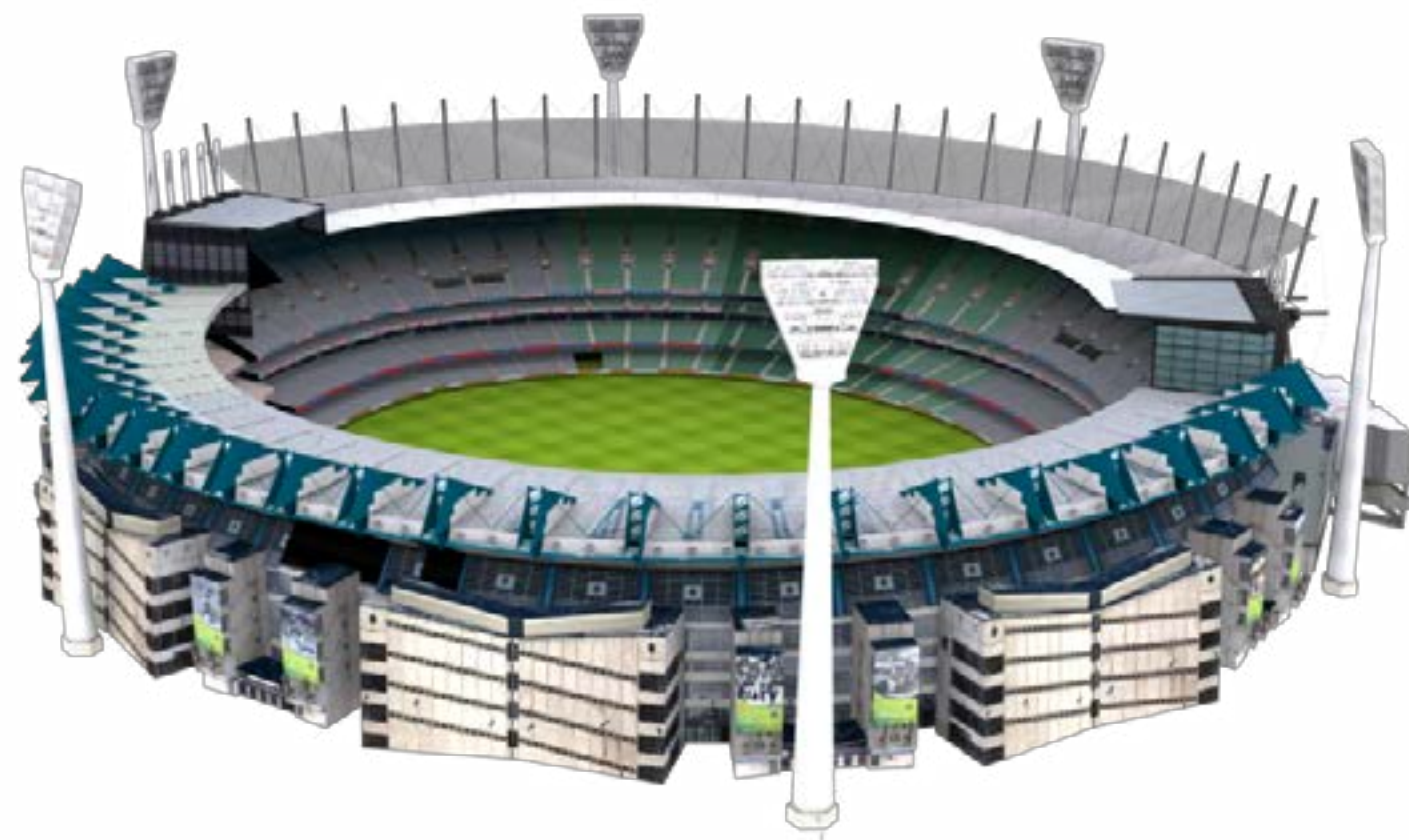
[PLAY STADIUM FLYBY](#)

AUSTRALIAN RULES STADIUMS - AUSTRALIA

MELBOURNE NORTH

CAPACITY : 100,021

CONSTRUCTED : 1853



Melbourne North is used for regular Australian football matches, by one of the top teams in the AFL.

The Melbourne Cricket Ground is regularly used for International cricket tests, was used for the 1956 Olympics.



[PLAY STADIUM FLYBY](#)

AUSTRALIAN RULES STADIUMS - AUSTRALIA

MELBOURNE SOUTH

CAPACITY : 100,021

CONSTRUCTED : 1853



Melbourne South is used for regular Australian football matches, by one of the top teams in the AFL.
The Melbourne Cricket Ground is regularly used for International cricket tests, was used for the 1956 Olympics.



[PLAY STADIUM FLYBY](#)

AUSTRALIAN RULES STADIUMS - AUSTRALIA

MELBOURNE WEST

CAPACITY : 100,021

CONSTRUCTED : 1853



Melbourne West is used for regular Australian football matches, by one of the top teams in the AFL. The Melbourne Cricket Ground regularly used for International cricket tests, was used for the 1956 Olympics.



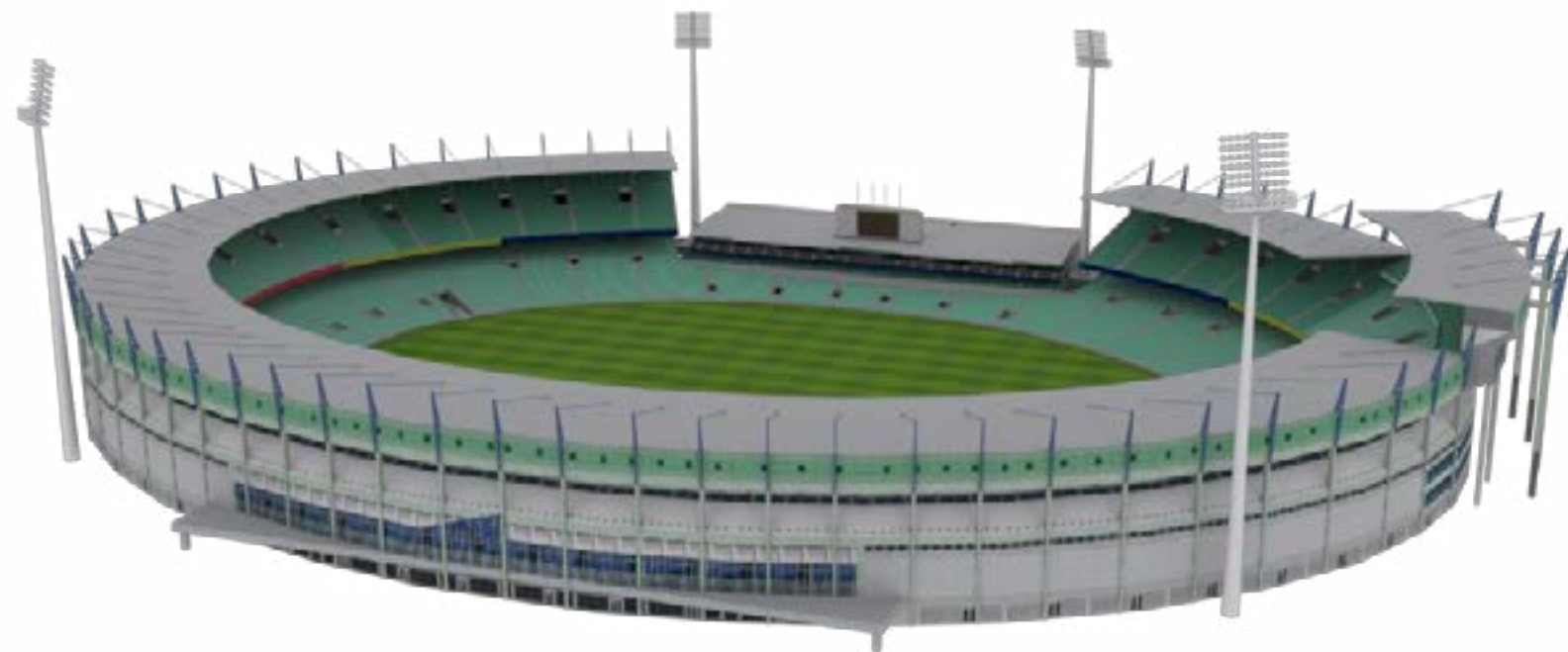
[PLAY STADIUM FLYBY](#)

AUSTRALIAN RULES STADIUMS - AUSTRALIA

PERTH NORTH

CAPACITY : 43,500

CONSTRUCTED : 1908



Perth North is used for regular Australian football matches, by one of the top teams in the AFL.
The Subiaco Domain Oval has been used previously for rugby union matches and soccer matches too.



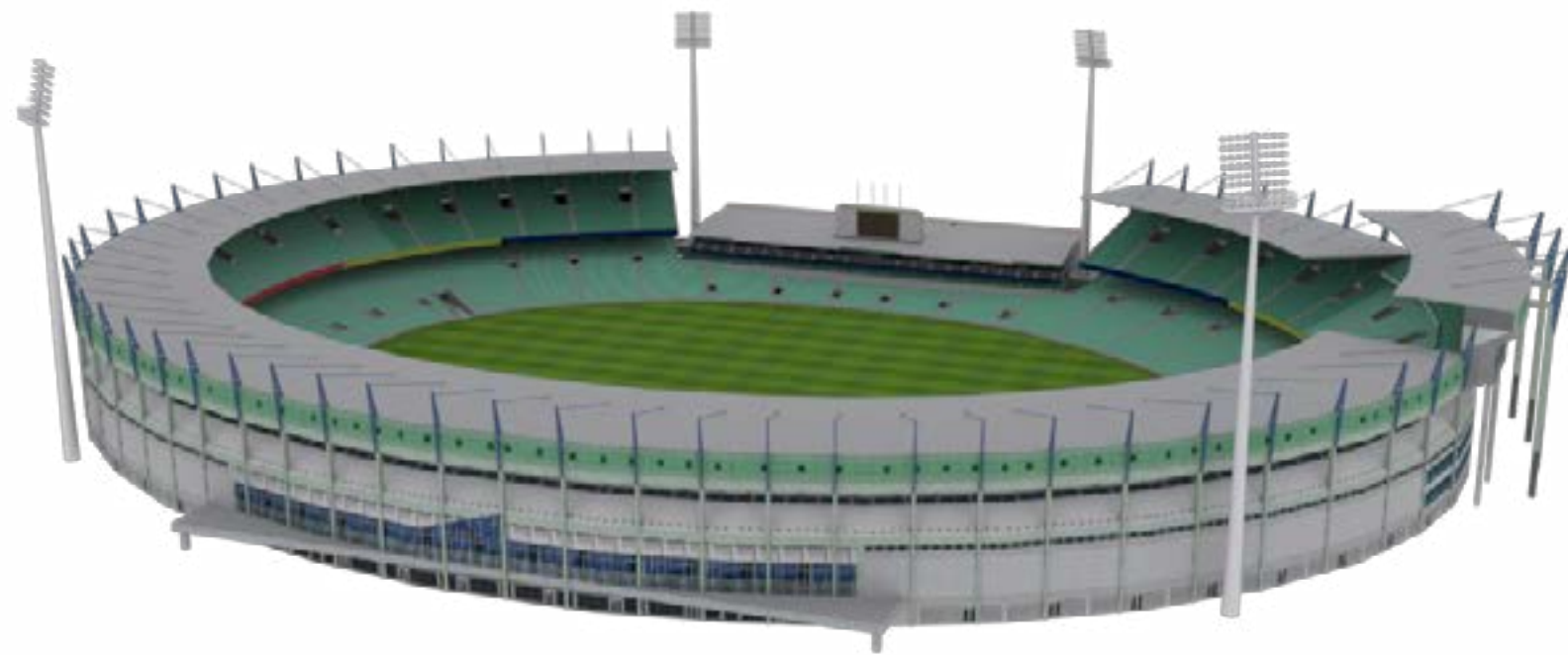
[PLAY STADIUM FLYBY](#)

AUSTRALIAN RULES STADIUMS - AUSTRALIA

PERTH SOUTH

CAPACITY : 43,500

CONSTRUCTED : 1908



Perth South is used for regular Australian football matches, by one of the top teams in the AFL.
The Subiaco Domain Oval has been used previously for rugby union matches and soccer matches too.



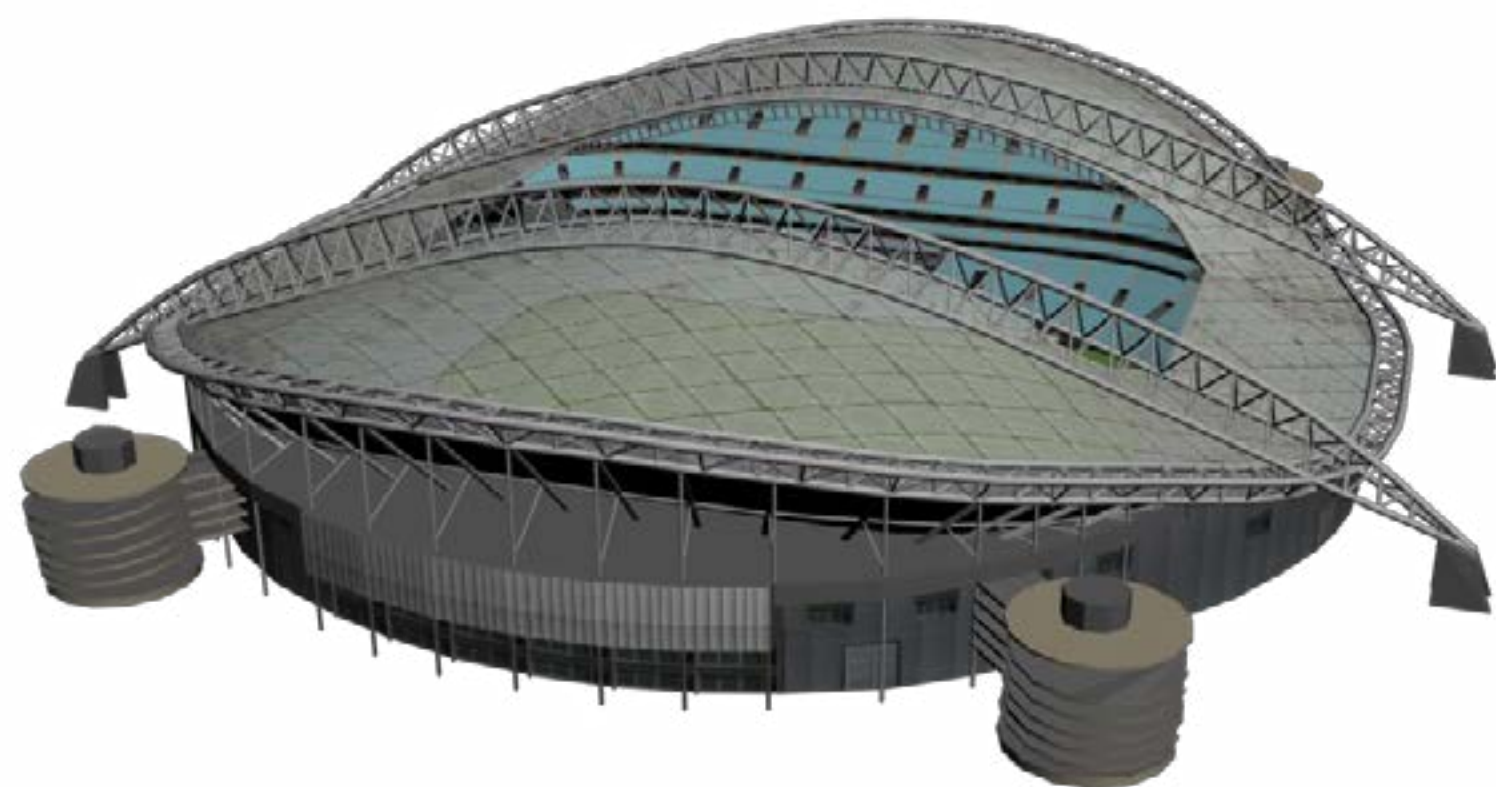
[PLAY STADIUM FLYBY](#)

AUSTRALIAN RULES STADIUMS - AUSTRALIA

SYDNEY EAST

CAPACITY : 83,500

CONSTRUCTED : 1999



Sydney East is used for regular Australian football matches, by one of the top teams in the AFL.
Stadium Australia was used for the 2000 Olympics, the Australian National rugby union and football teams.



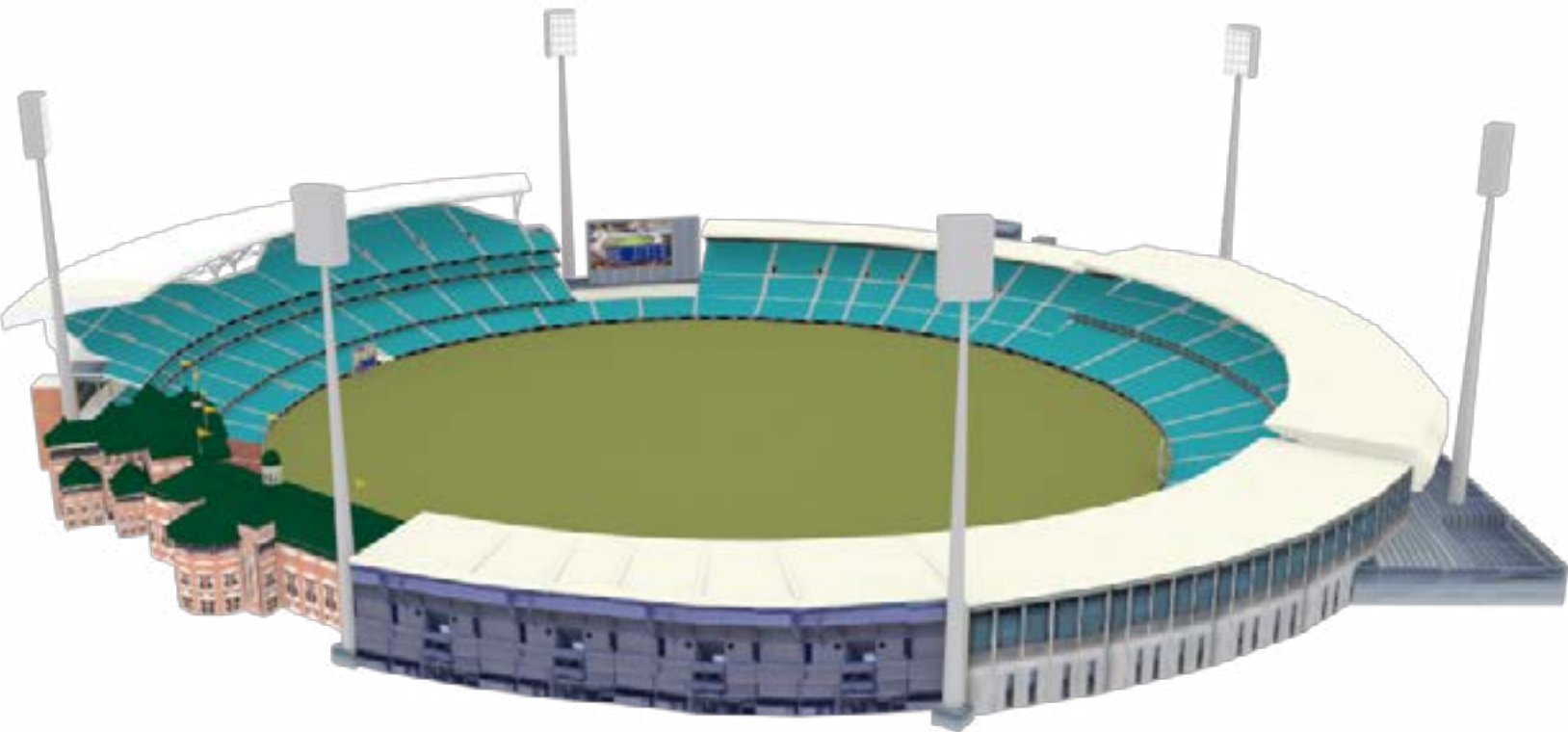
[PLAY STADIUM FLYBY](#)

AUSTRALIAN RULES STADIUMS - AUSTRALIA

SYDNEY WEST

CAPACITY : 48,000

CONSTRUCTED : 1848



Sydney West is used for regular Australian football matches, by one of the top teams in the AFL.
Sydney Cricket Ground is famous for International and county cricket matches, was the home of rugby league.



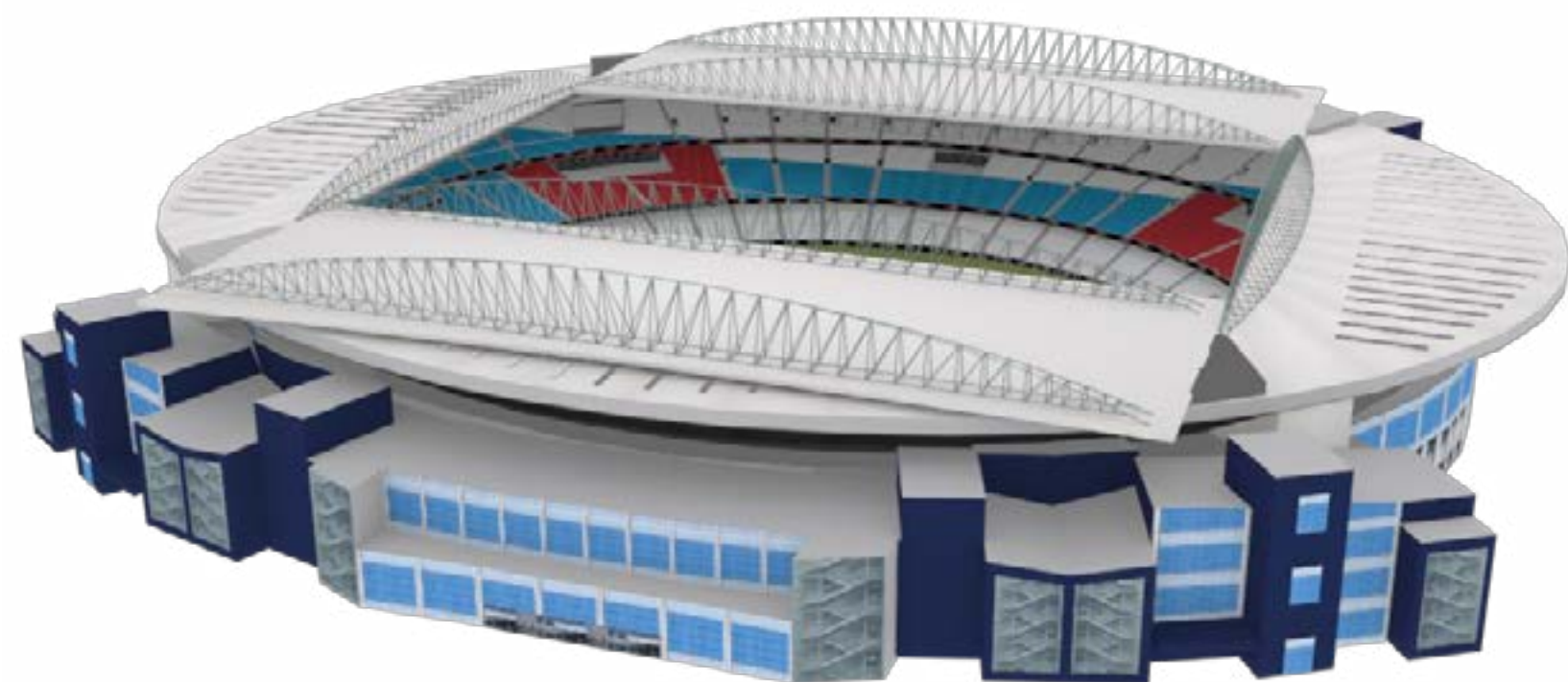
[PLAY STADIUM FLYBY](#)

AUSTRALIAN RULES STADIUMS - AUSTRALIA

VICTORIA EAST

CAPACITY : 53,359

CONSTRUCTED : 2000



Victoria East is used for regular Australian football matches, by one of the top teams in the AFL.
The Etihad Stadium hosts other sporting events, for football, cricket, rugby league and rugby union.



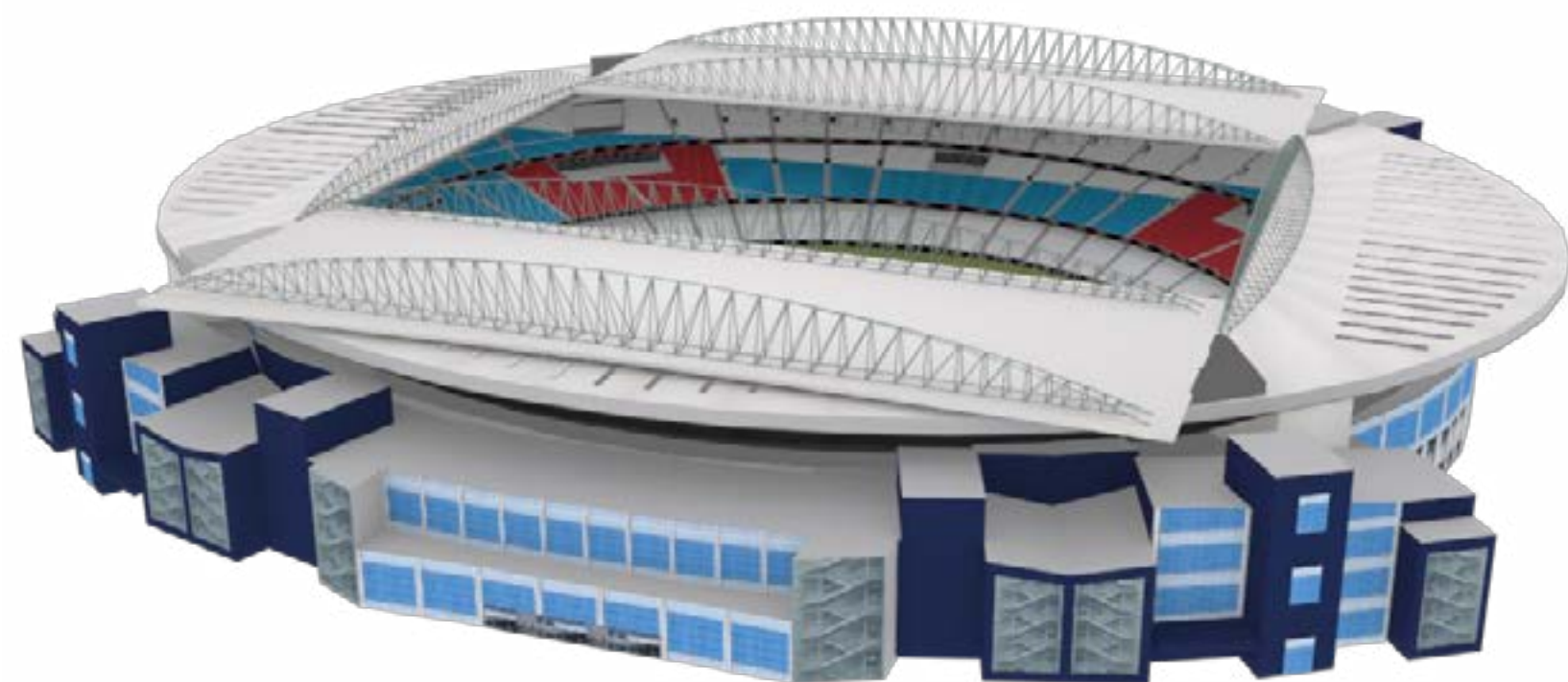
[PLAY STADIUM FLYBY](#)

AUSTRALIAN RULES STADIUMS - AUSTRALIA

VICTORIA NORTH

CAPACITY : 53,359

CONSTRUCTED : 2000



Victoria North is used for regular Australian football matches, by one of the top teams in the AFL.
The Etihad Stadium hosts other sporting events, for football, cricket, rugby league and rugby union.



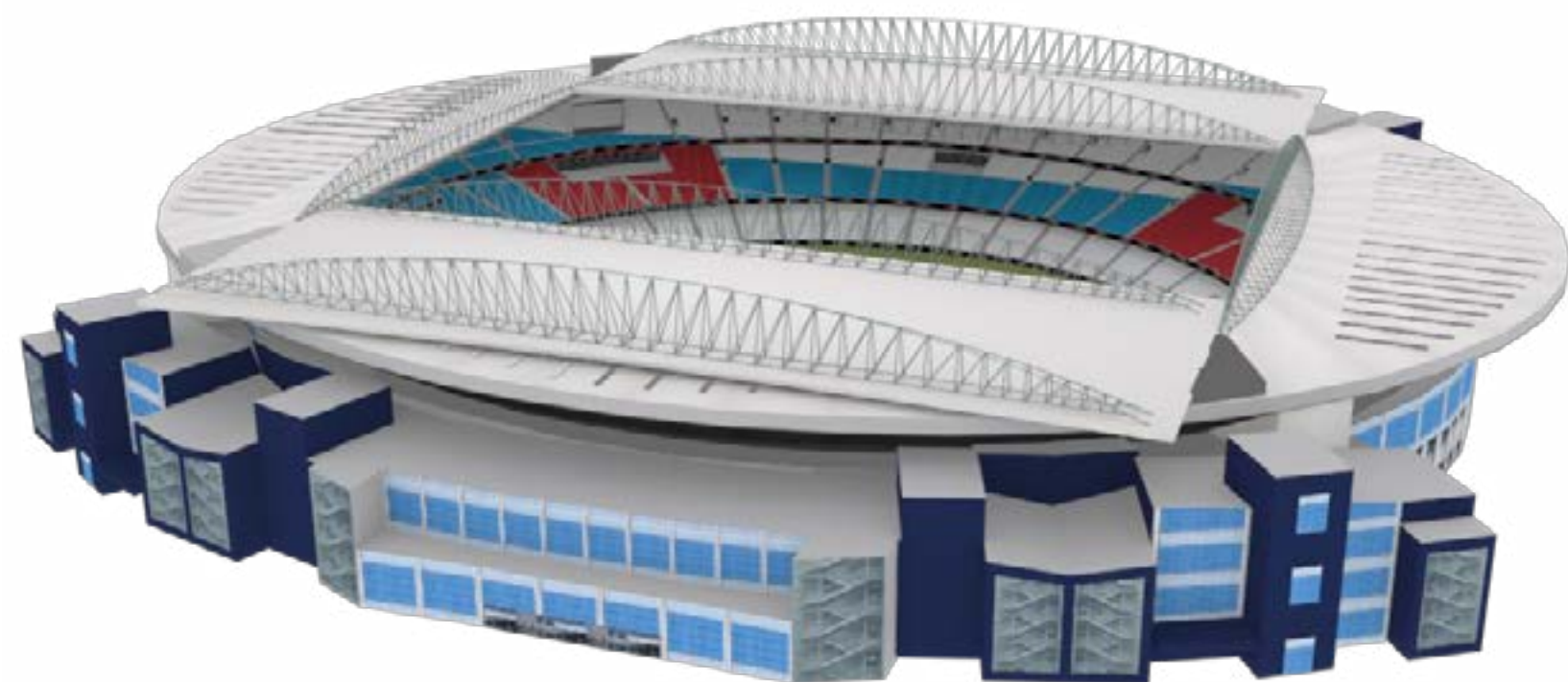
[PLAY STADIUM FLYBY](#)

AUSTRALIAN RULES STADIUMS - AUSTRALIA

VICTORIA SOUTH

CAPACITY : 53,359

CONSTRUCTED : 2000



Victoria South is used for regular Australian football matches, by one of the top teams in the AFL.
The Etihad Stadium hosts other sporting events, for football, cricket, rugby league and rugby union.



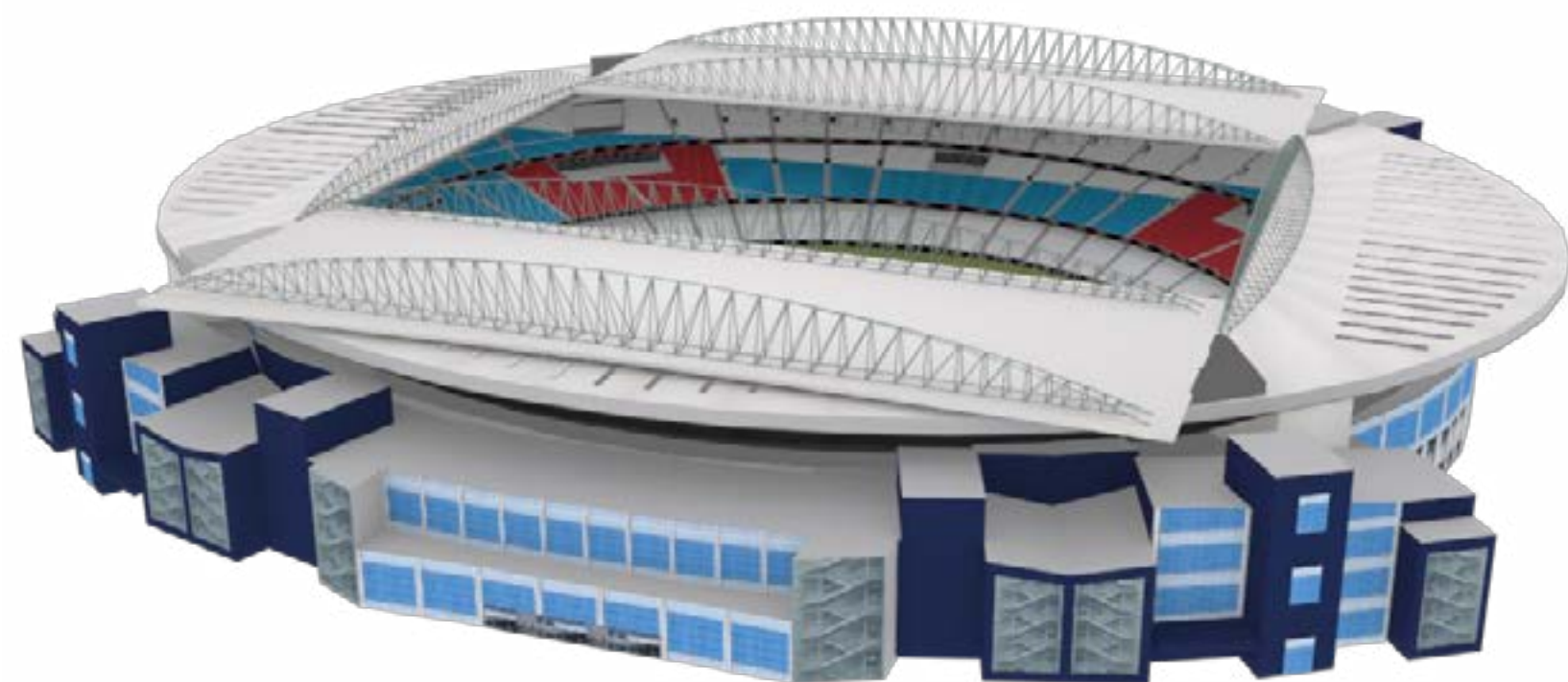
[PLAY STADIUM FLYBY](#)

AUSTRALIAN RULES STADIUMS - AUSTRALIA

VICTORIA WEST

CAPACITY : 53,359

CONSTRUCTED : 2000



Victoria West is used for regular Australian football matches, by one of the top teams in the AFL.
The Etihad Stadium hosts other sporting events, for football, cricket, rugby league and rugby union.



[PLAY STADIUM FLYBY](#)