

RUGBY UNION STADIUMS - AUSTRALIA

ADELAIDE

CAPACITY : 53,583

CONSTRUCTED : 1871



Adelaide is used for cricket matches, by one of the top teams in the Australian league. The Adelaide Oval famous for hosting tests for the Australian cricket team, AFL, and the 2013 Rugby World Cup.



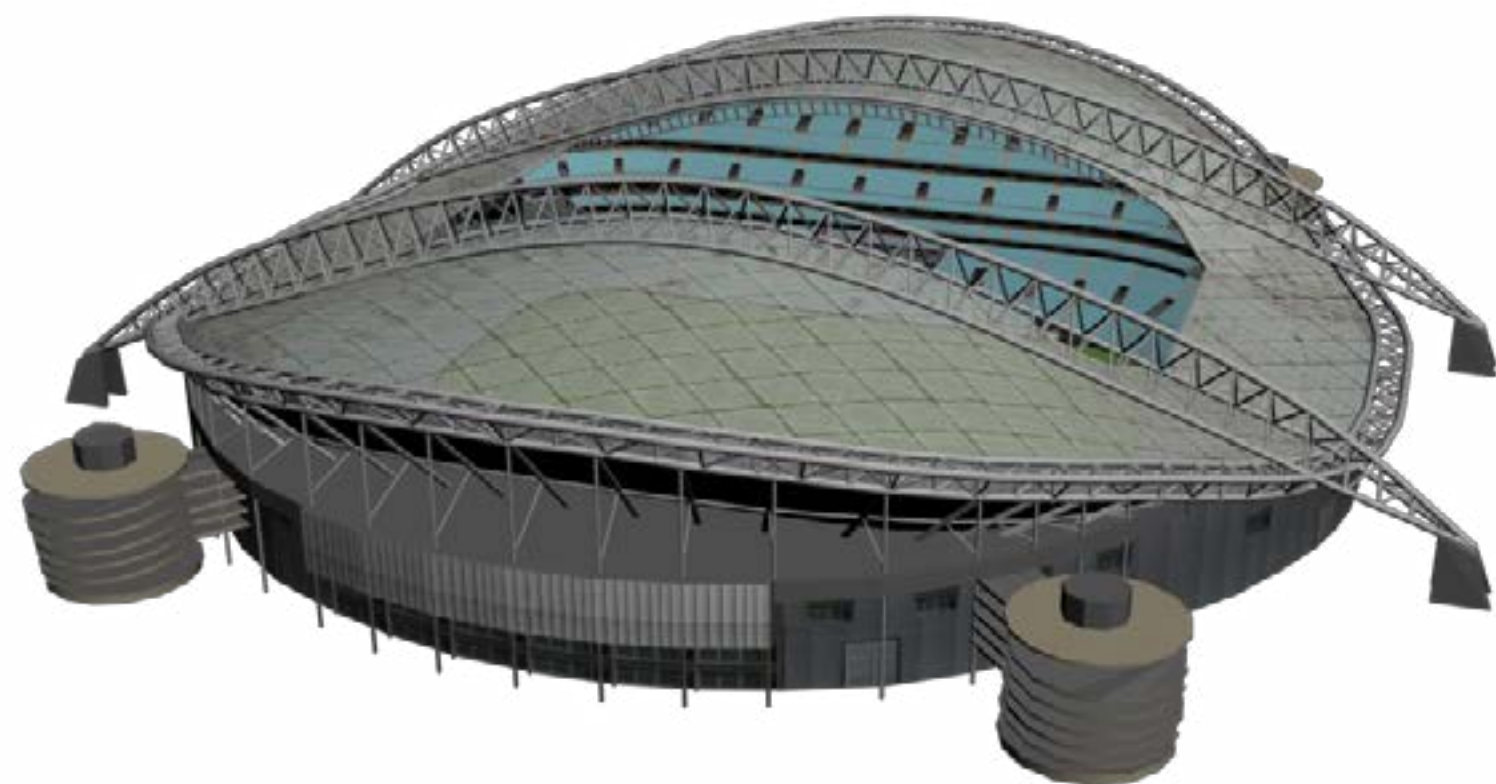
[PLAY STADIUM FLYBY](#)

RUGBY UNION STADIUMS - AUSTRALIA

AUSTRALIA NATIONAL

CAPACITY : 83,500

CONSTRUCTED : 1999



Australia National is used for regular International matches for the National rugby team, in Sydney.
The ANZ Stadium hosted the 2000 Summer Olympics and the 2003 Rugby World Cup Final.



[PLAY STADIUM FLYBY](#)

RUGBY UNION STADIUMS - AUSTRALIA

BRISBANE

CAPACITY : 52,500

CONSTRUCTED : 1914



Brisbane is used for regular matches in the Australian Super league.
The Suncorp Stadium host's AFL, football, rugby league, football; its record attendance was for the 2013 British Lions match.



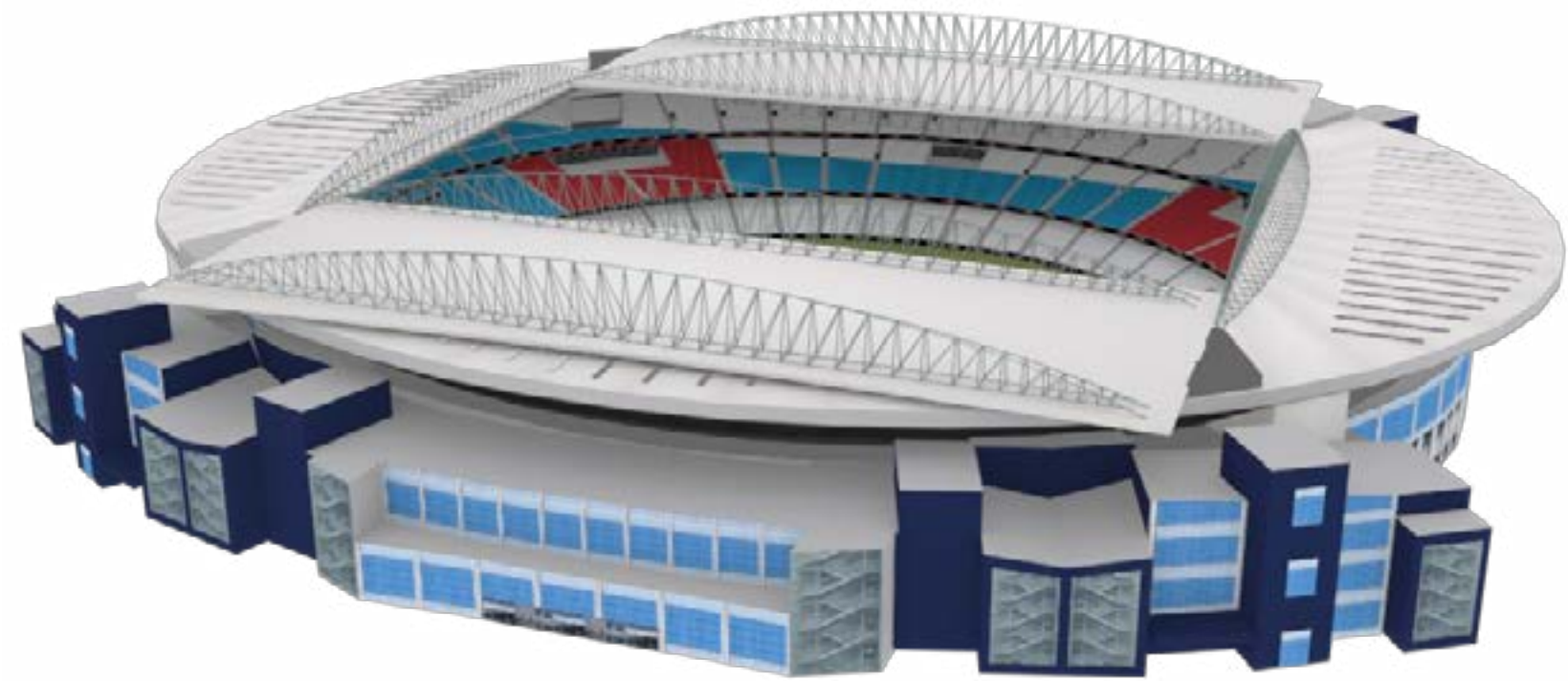
[PLAY STADIUM FLYBY](#)

RUGBY UNION STADIUMS - AUSTRALIA

MELBOURNE

CAPACITY : 53,359

CONSTRUCTED : 2000



Melbourne is used for regularly for International matches for the Australian National team.
The Etihad Stadium often plays host to other sporting events, such as football, cricket, rugby league and AFL.



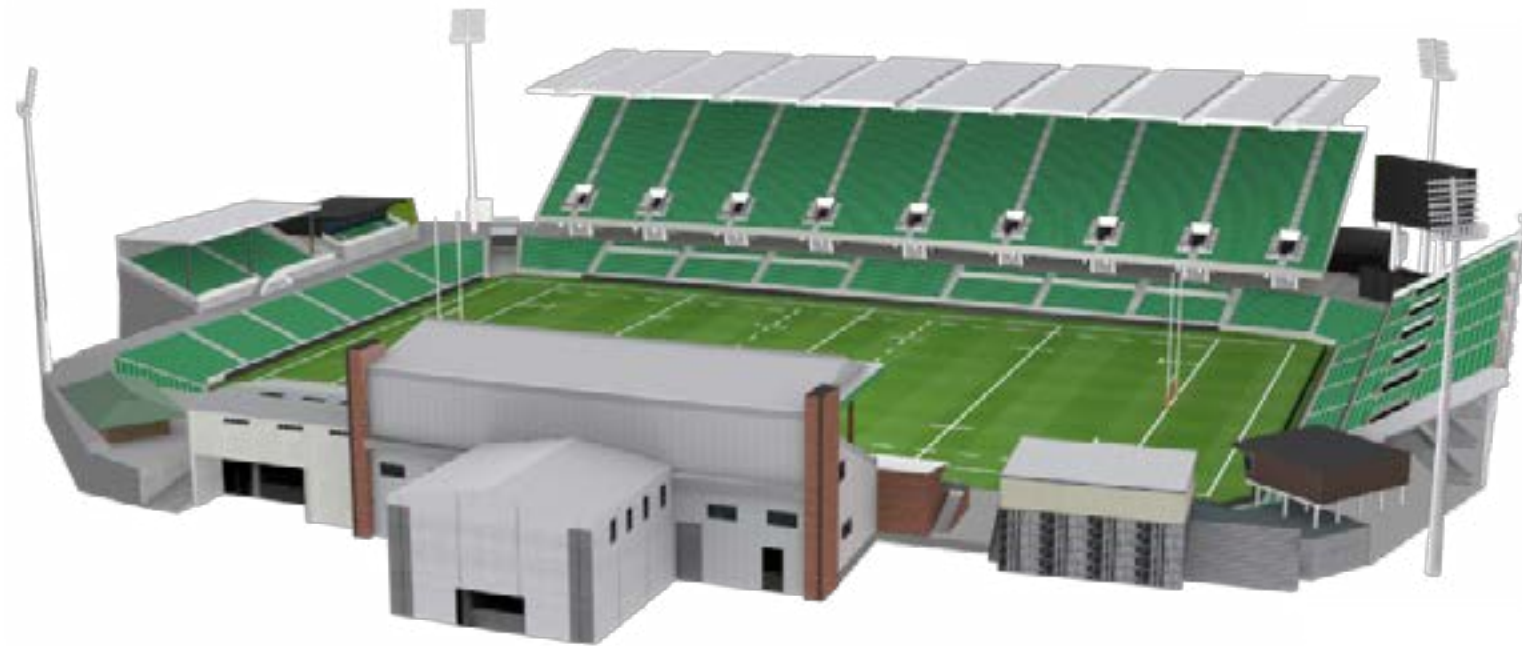
[PLAY STADIUM FLYBY](#)

RUGBY UNION STADIUMS - AUSTRALIA

PERTH

CAPACITY : 20,500

CONSTRUCTED : 1910



Perth is used for regular matches in the Australian Super league, by a top team.
The Nib Stadium also hosts a top team in the Australian A-league for football teams, rugby league and concerts too.



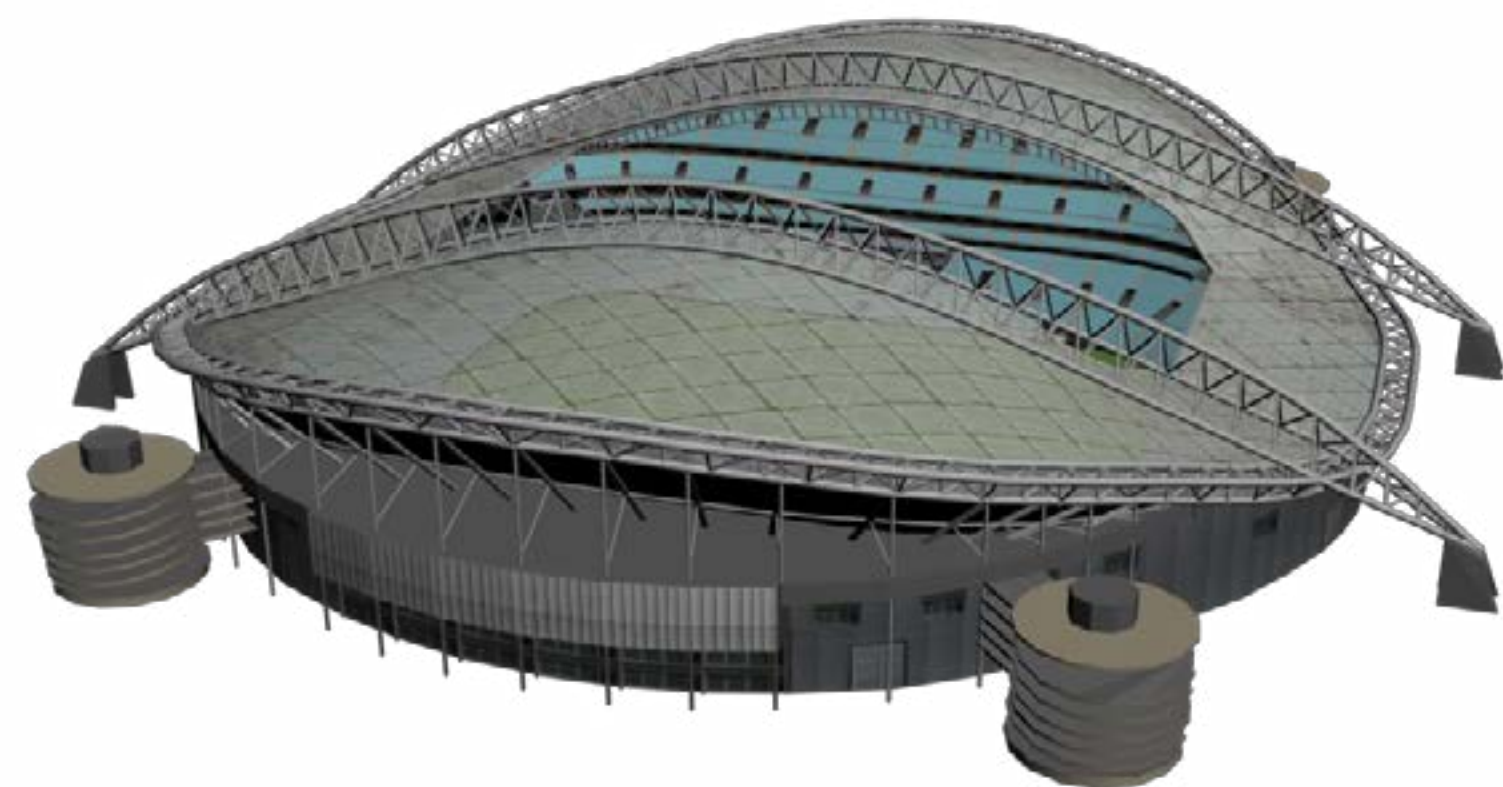
[PLAY STADIUM FLYBY](#)

RUGBY UNION STADIUMS - AUSTRALIA

SYDNEY EAST

CAPACITY : 83,500

CONSTRUCTED : 1999



Sydney East is used for regular matches in the Australian Super league, by a top team.
The ANZ Stadium hosted the 2000 Summer Olympics, the 2013 Rugby World Cup Final and the National rugby team.



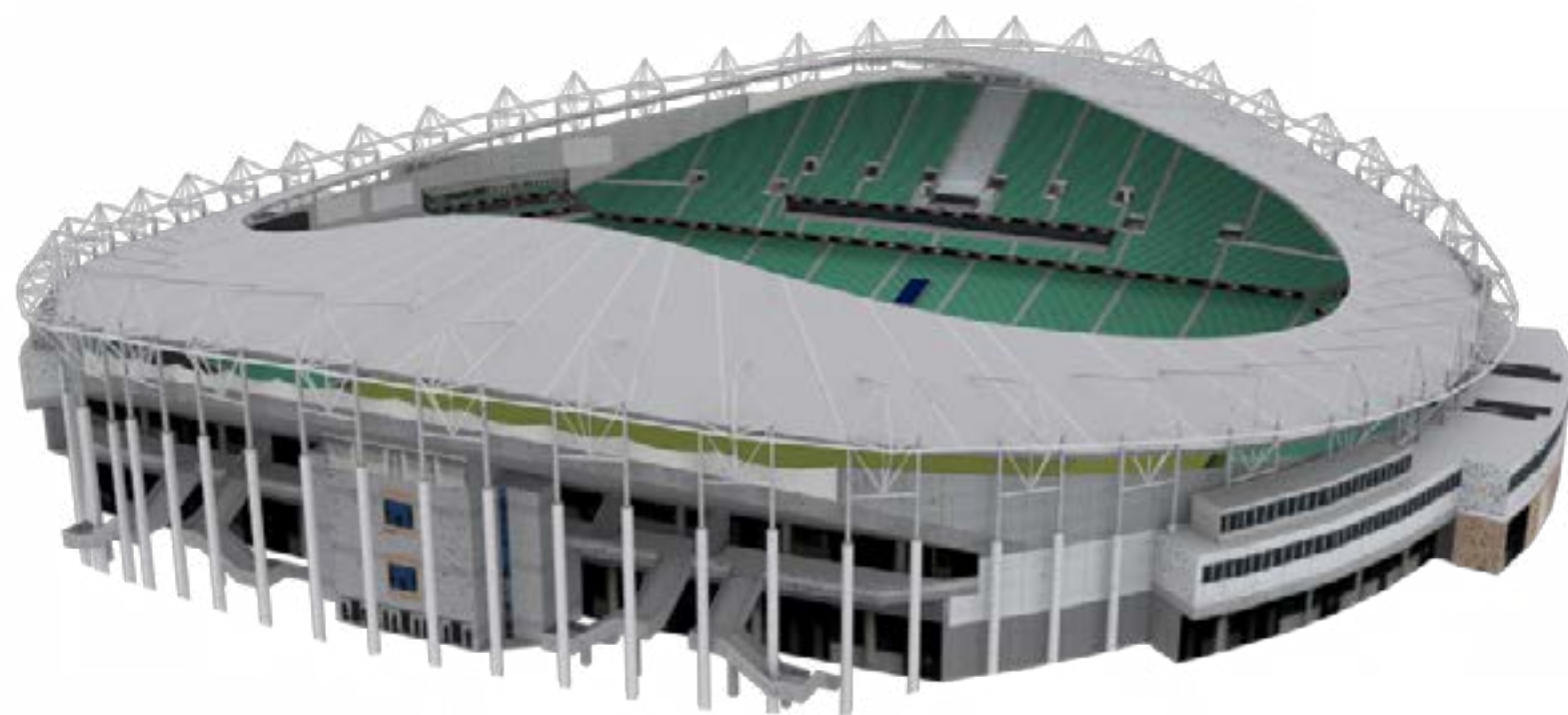
[PLAY STADIUM FLYBY](#)

RUGBY UNION STADIUMS - AUSTRALIA

SYDNEY SOUTH

CAPACITY : 52,500

CONSTRUCTED : 1914



Sydney South is used for regular matches in the Australian Super league, by a top team.
The Suncorp Stadium hosts rugby union, rugby league, football and the 2008 Rugby League World Cup Final.



[PLAY STADIUM FLYBY](#)

RUGBY UNION STADIUMS - AUSTRALIA

SYDNEY WEST

CAPACITY : 20,741

CONSTRUCTED : 1986



Sydney West is used for regular matches in the Australian Super league, by a top team.
The Parramatta Stadium is also used regularly for rugby league and occasional Australian rules team matches.



[PLAY STADIUM FLYBY](#)