

CRICKET STADIUMS - AUSTRALIA

ADELAIDE

CAPACITY : 53,583

CONSTRUCTED : 1871



Adelaide is used for cricket matches, by one of the top teams in the Australian league. The Adelaide Oval famous for hosting tests for the Australian cricket team, AFL, and the 2013 Rugby World Cup.



[PLAY STADIUM FLYBY](#)

CRICKET STADIUMS - AUSTRALIA

BRISBANE

CAPACITY : 42,000

CONSTRUCTED : 1895



Brisbane is used for cricket matches, by one of the top teams in the Australian league. The Gabba is famous for hosting test matches for the Australian cricket team, for AFL, and for Rugby matches.



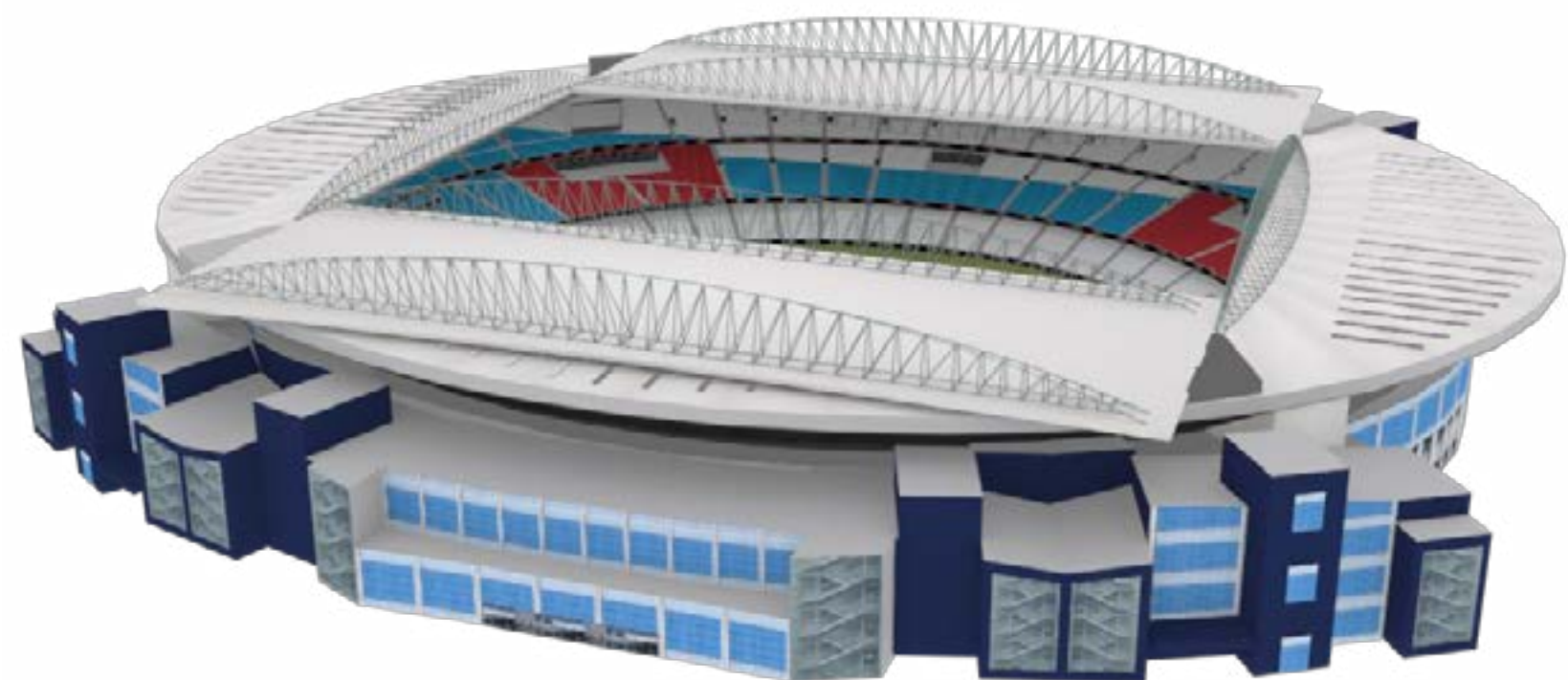
[PLAY STADIUM FLYBY](#)

CRICKET STADIUMS - AUSTRALIA

MELBOURNE EAST

CAPACITY : 56,347

CONSTRUCTED : 2000



Melbourne is used for cricket matches, by one of the top teams in the Australian league. The Etihad Stadium has hosted the 2008 Rugby World League Cup and several Tri Nation Rugby Union matches.



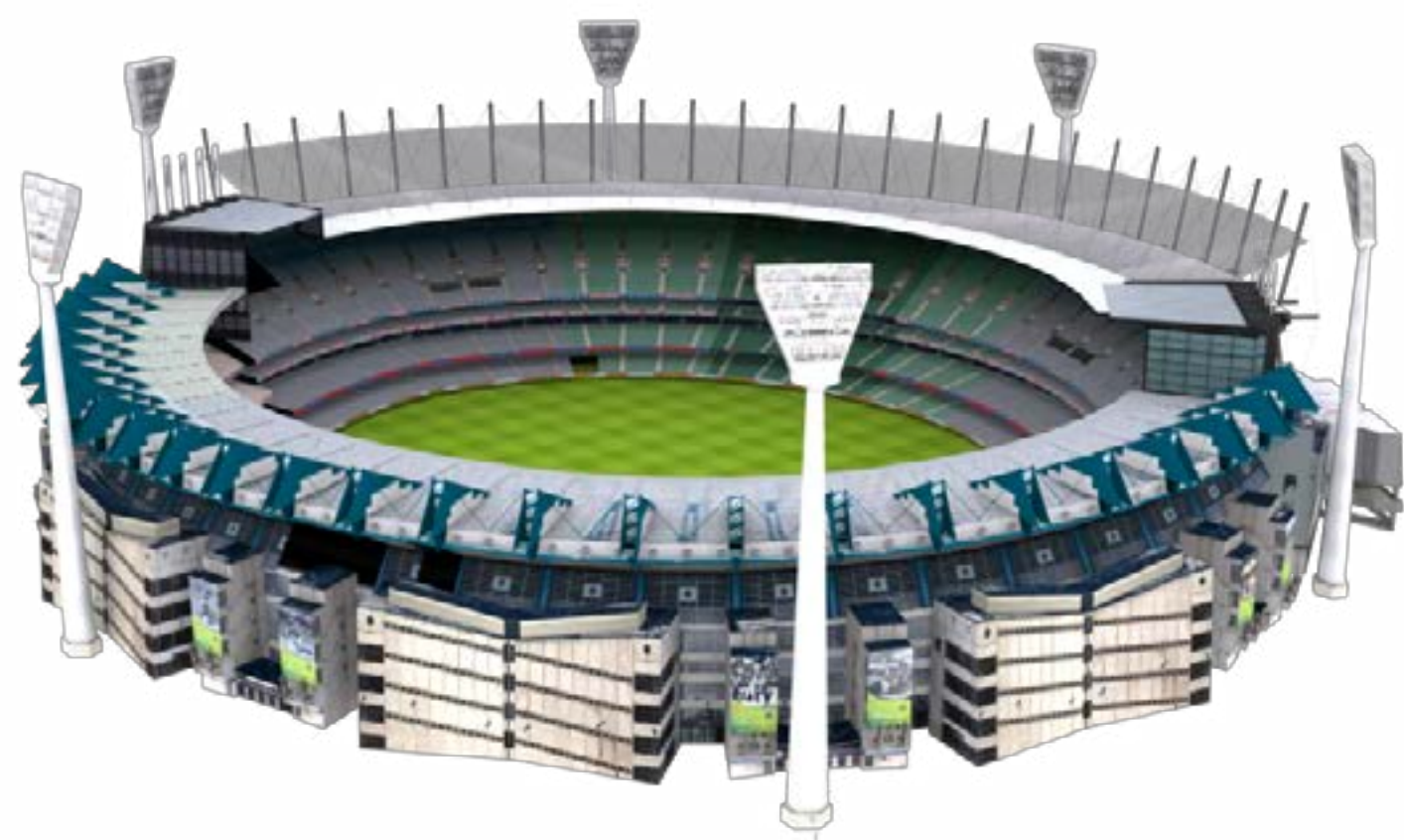
[PLAY STADIUM FLYBY](#)

CRICKET STADIUMS - AUSTRALIA

MELBOURNE WEST

CAPACITY : 100,024

CONSTRUCTED : 1854



Melbourne is used for cricket matches, by one of the top teams in the Australian league. The Melbourne Cricket Ground is famous for hosting test matches and for the 1956 Summer Olympics.



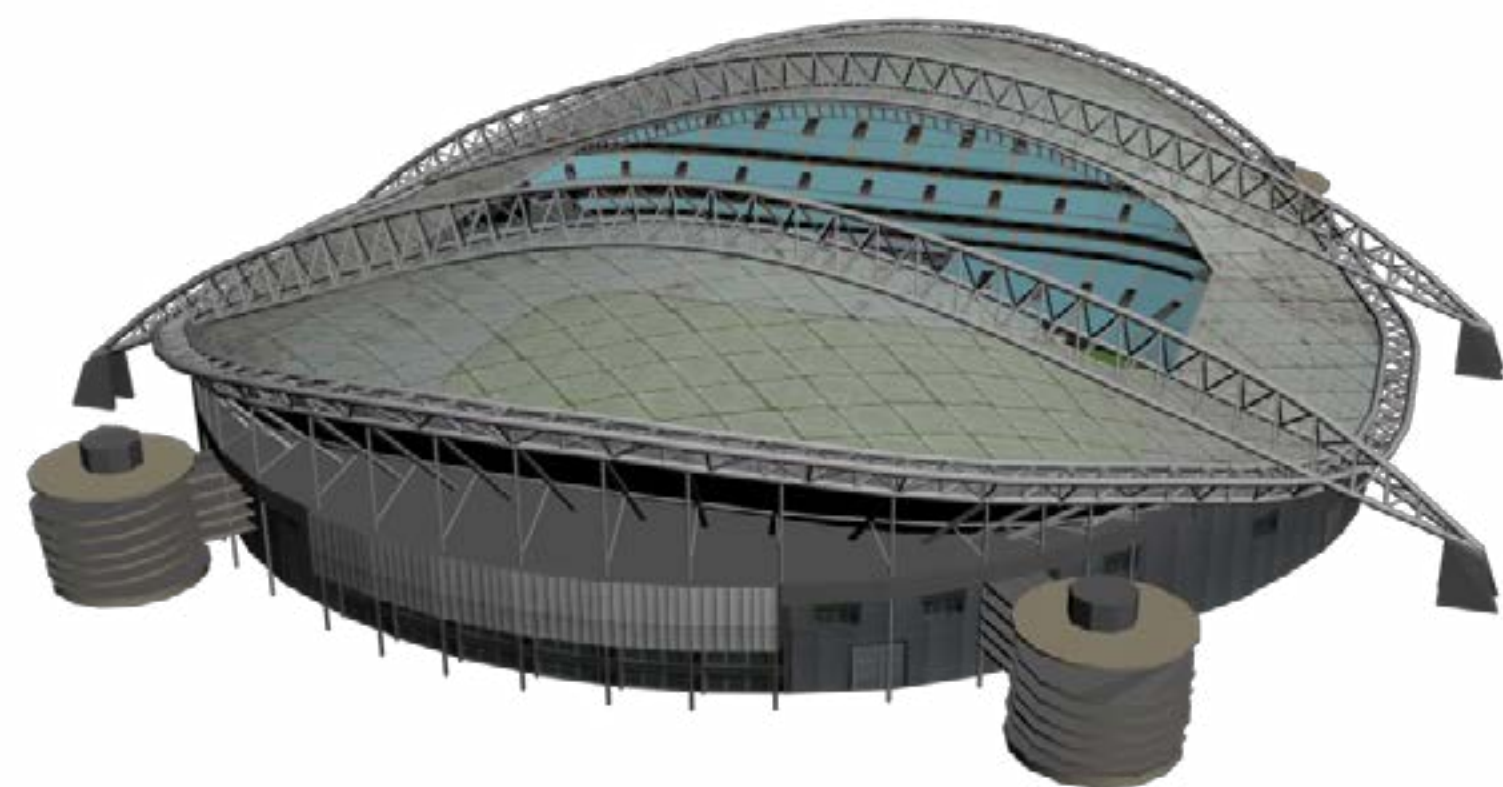
[PLAY STADIUM FLYBY](#)

CRICKET STADIUMS - AUSTRALIA

SYDNEY EAST

CAPACITY : 82,500

CONSTRUCTED : 1999



Sydney East is used for cricket matches, by one of the top teams in the Australian league. The ANZ Stadium hosted 2003 Rugby Union World Cup Finals and the 2017 Rugby League World Cup Finals.



[PLAY STADIUM FLYBY](#)

CRICKET STADIUMS - AUSTRALIA

SYDNEY WEST

CAPACITY : 48,000

CONSTRUCTED : 1848



Sydney West is used for cricket matches, by one of the top teams in the Australian league. The Sydney Cricket Ground hosted the 2000 Summer Olympics and the 2003 Rugby Union World Cup.



[PLAY STADIUM FLYBY](#)