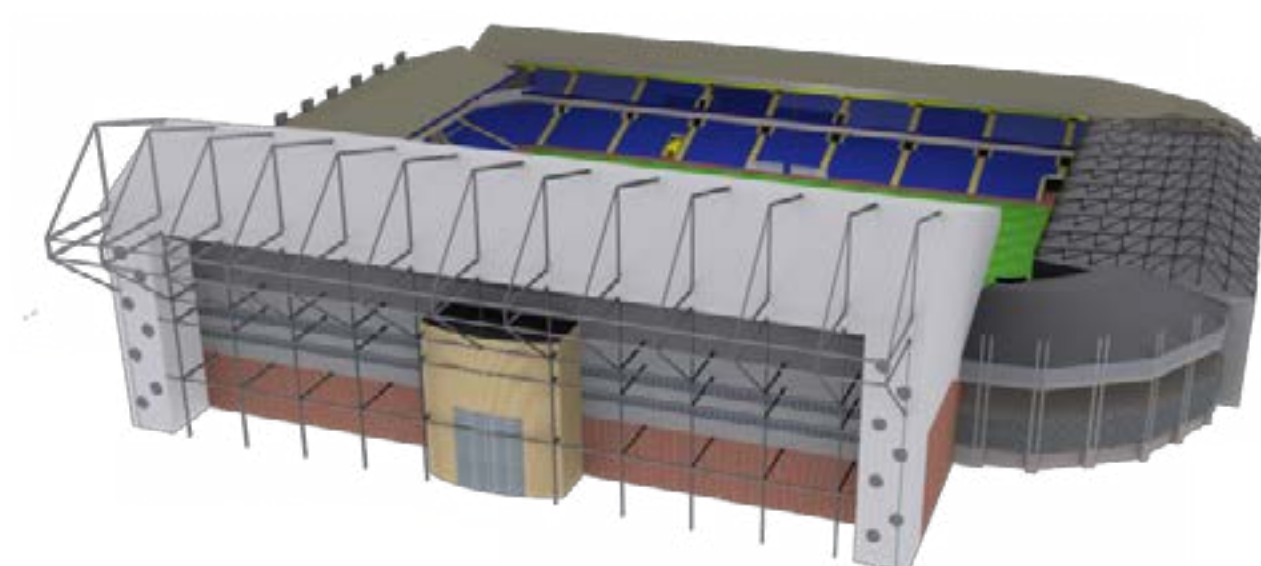


RUGBY LEAGUE STADIUMS - ENGLAND

ENGLAND NATIONAL

CAPACITY : 40,242

CONSTRUCTED : 1897



England National is used for regular International, rugby league matches.
The Elland Road Stadium hosts regular football league matches, it hosted 2 games during the 2015 Rugby Union World Cup.



[PLAY STADIUM FLYBY](#)

RUGBY LEAGUE STADIUMS - ENGLAND

HULL

CAPACITY : 25,404

CONSTRUCTED : 2002



Hull is used for regular team rugby, in the rugby super league by one of the top teams.
The KC Stadium is also used by a football team in the league, several top bands have hosted concerts here.



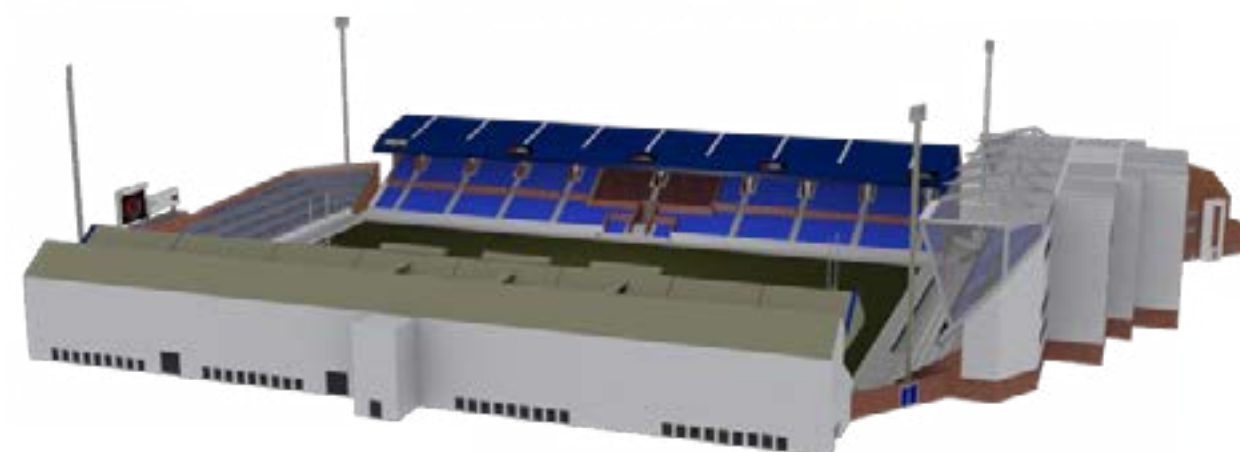
[PLAY STADIUM FLYBY](#)

RUGBY LEAGUE STADIUMS - ENGLAND

LEEDS

CAPACITY : 21,062

CONSTRUCTED : 1890



Leeds is used for regular team rugby, in the rugby super league by one of the top teams.
The Headingley Carnegie Stadium is used by a rugby union team, it hosted the 2013 Rugby League World Cup.



[PLAY STADIUM FLYBY](#)

RUGBY LEAGUE STADIUMS - ENGLAND

LONDON

CAPACITY : 90,000

CONSTRUCTED : 2007



London is the home ground for the annual Rugby's Challenge Cup Final.
The Wembley Stadium is also used regularly International football matches and the Football Association Cup Finals.



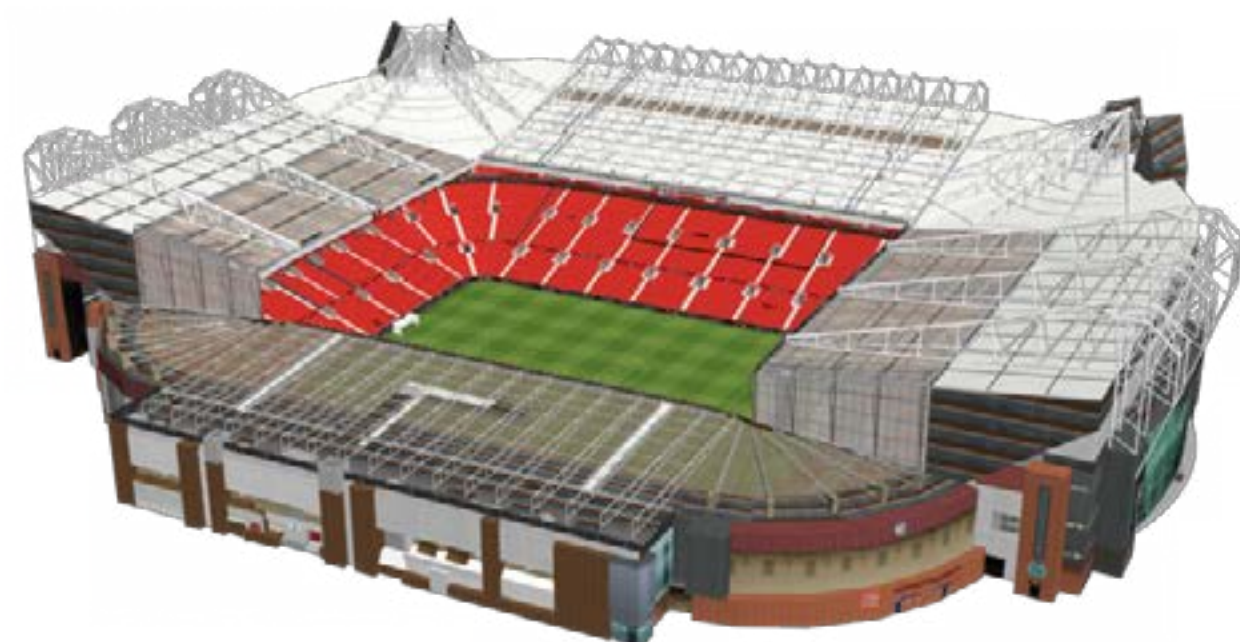
[PLAY STADIUM FLYBY](#)

RUGBY LEAGUE STADIUMS - ENGLAND

MANCHESTER

CAPACITY : 76,212

CONSTRUCTED : 1910



Manchester is often used for International rugby matches. The Old Trafford stadium has also hosted the 2012 Summer Olympics football, the 1996 European Championship, and 2003 European Cup Finals.



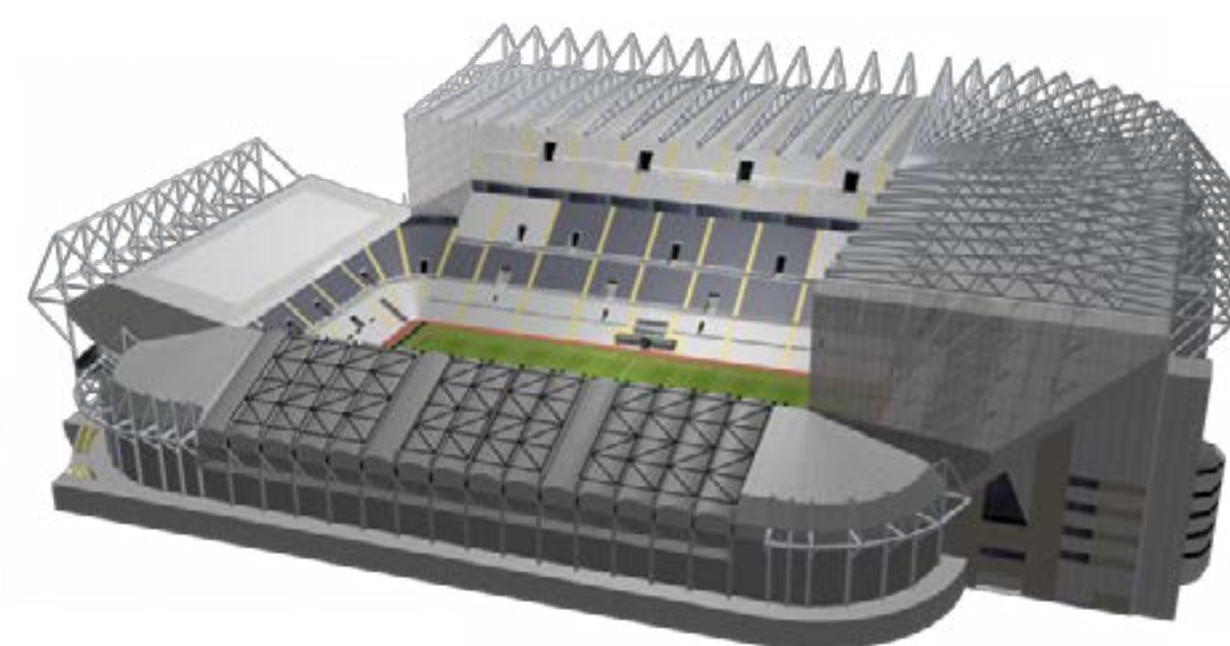
[PLAY STADIUM FLYBY](#)

RUGBY LEAGUE STADIUMS - ENGLAND

NEWCASTLE

CAPACITY : 52,404

CONSTRUCTED : 1880



Newcastle is used for the Dacia Magic Weekend at St. James Park, an annual event organized by the rugby football league. In which an entire round of Super league matches, are played over the weekend.



[PLAY STADIUM FLYBY](#)

RUGBY LEAGUE STADIUMS - ENGLAND

SALFORD

CAPACITY : 12,000

CONSTRUCTED : 2012



Salford hosts regular rugby league, in the super league, by a team that was formed in 1873, who have won 6 Championships and one Challenge Cup. The AJ Bell Stadium hosts a top rugby union team.



[PLAY STADIUM FLYBY](#)

RUGBY LEAGUE STADIUMS - ENGLAND

ST HELENS

CAPACITY : 18,000

CONSTRUCTED : 2011



St Helens hosts regular rugby league in the super league, one of the top teams.
The Langtree Park Stadium hosted a group match in the 2013 Rugby League World Cup, between Australia and Fiji.



[PLAY STADIUM FLYBY](#)

RUGBY LEAGUE STADIUMS - ENGLAND

WARRINGTON

CAPACITY : 15,200

CONSTRUCTED : 2004



Warrington currently hosts regular team rugby, in the super league. The Halliwell Jones Stadium has staged the Challenge Cup semi-finals, the European Nations Final and the National League Grand Finals.



[PLAY STADIUM FLYBY](#)

RUGBY LEAGUE STADIUMS - ENGLAND

WIGAN

CAPACITY : 25,138

CONSTRUCTED : 1999



Wigan currently hosts regular team rugby in the super league, by a top team.
The DW Stadium hosts a football team in the league, as well as regular club and International rugby league matches.



[PLAY STADIUM FLYBY](#)