

# RUGBY LEAGUE STADIUMS - AUSTRALIA

ADELAIDE

CAPACITY : 53,583

CONSTRUCTED : 1871



Adelaide is used for cricket matches, by one of the top teams in the Australian league. The Adelaide Oval famous for hosting tests for the Australian cricket team, AFL, and the 2013 Rugby World Cup.



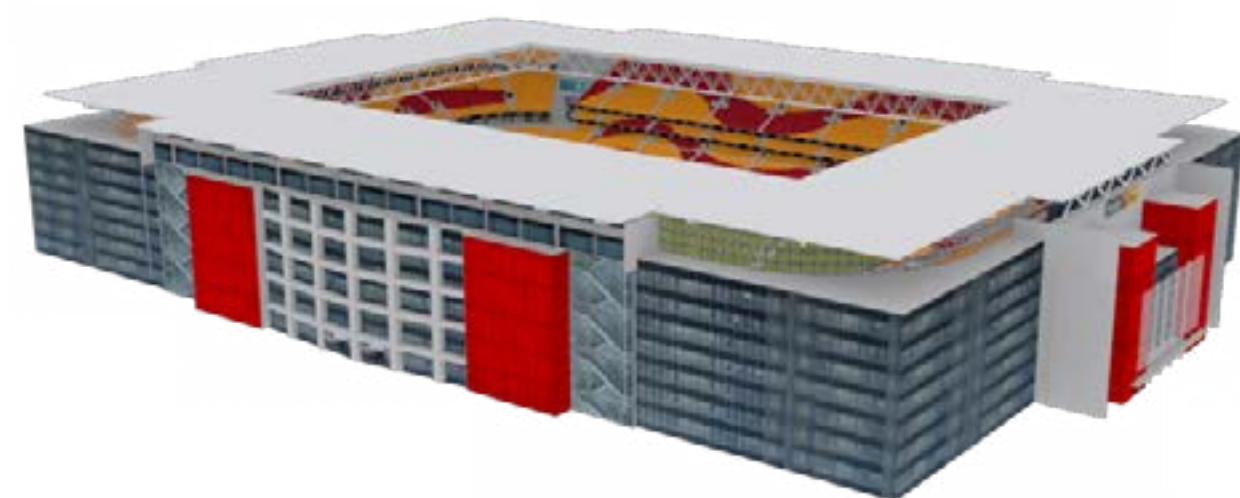
[PLAY STADIUM FLYBY](#)

# RUGBY LEAGUE STADIUMS - AUSTRALIA

BRISBANE

CAPACITY : 52,500

CONSTRUCTED : 1914



Brisbane is used for regular rugby league matches, by one of the top teams.

The Suncorp Stadium has hosted other sporting events, for rugby union Internationals, football and rugby union matches.



[PLAY STADIUM FLYBY](#)

# RUGBY LEAGUE STADIUMS - AUSTRALIA

MELBOURNE

CAPACITY : 53,359

CONSTRUCTED : 2000



Melbourne is used for regular rugby league matches, by one of the top teams.  
The Docklands Stadium has been host to other sporting events, for football, cricket, Australian rules and rugby union.



[PLAY STADIUM FLYBY](#)



# RUGBY LEAGUE STADIUMS - AUSTRALIA

NEWCASTLE AUSTRALIA

CAPACITY : 33,000

CONSTRUCTED : 1970



Newcastle Australia is used for regular rugby league matches, by one of the top teams in the NRL. The Newcastle International Sports Centre also hosts one of the top soccer teams in the A-League too.



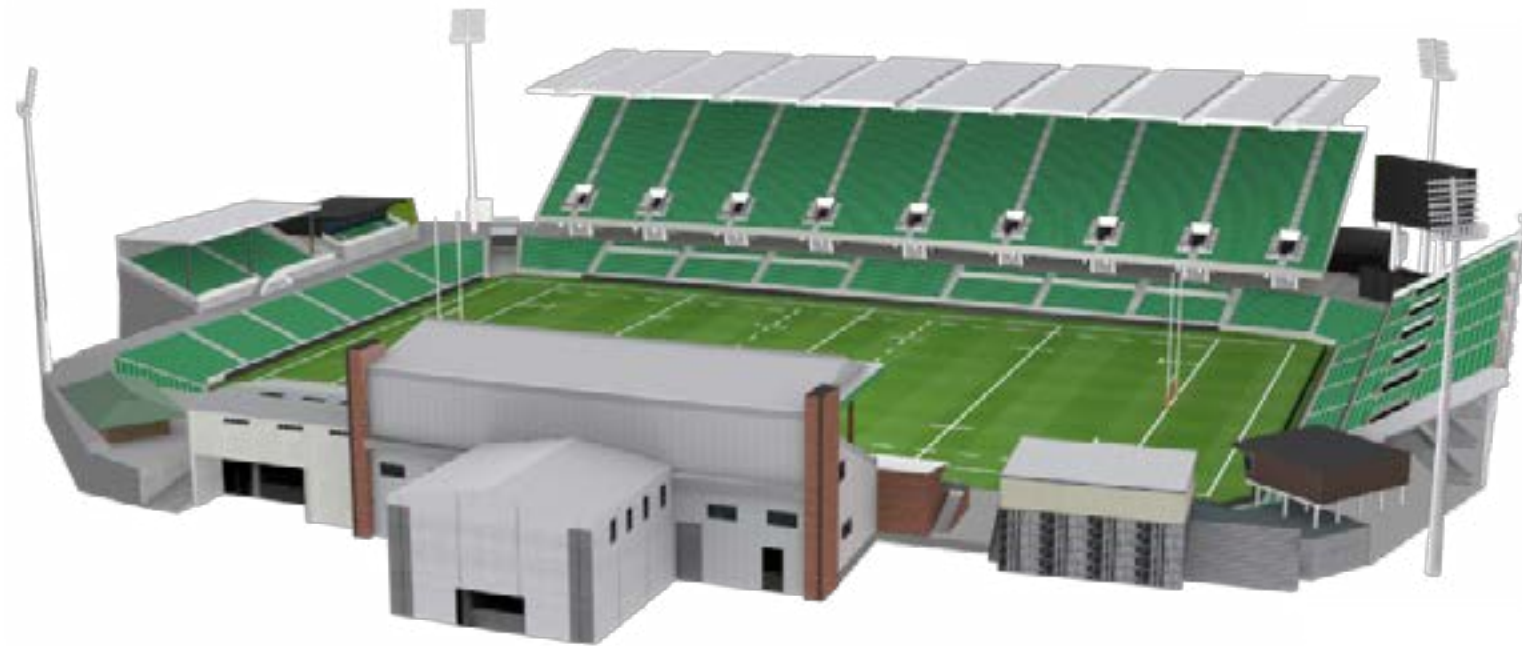
[PLAY STADIUM FLYBY](#)

# RUGBY LEAGUE STADIUMS - AUSTRALIA

PERTH

CAPACITY : 20,500

CONSTRUCTED : 1910



Perth is used for regular matches in the Australian Super league, by a top team.  
The Nib Stadium also hosts a top team in the Australian A-league for football teams, rugby league and concerts too.



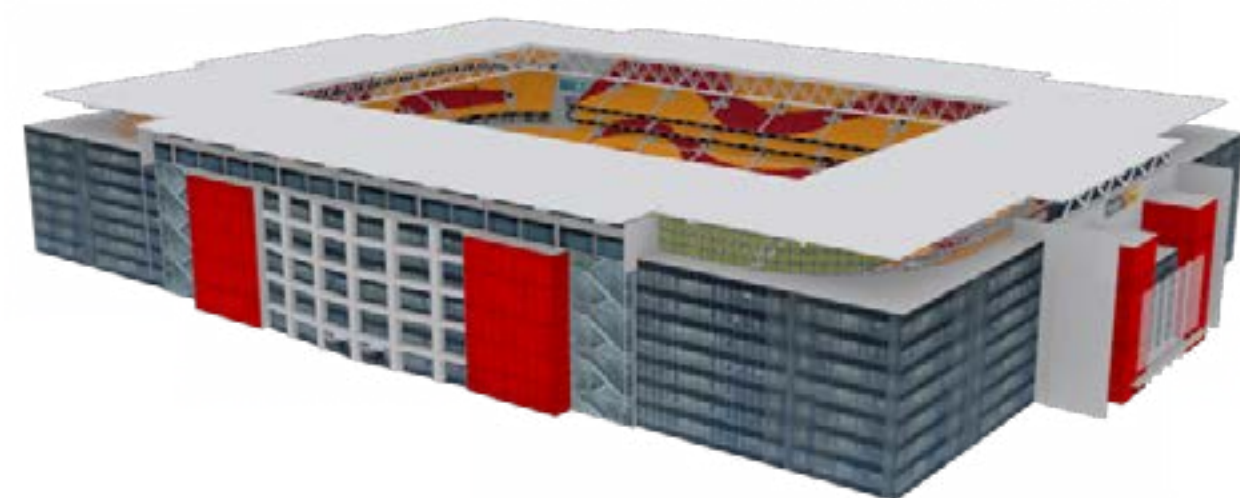
[PLAY STADIUM FLYBY](#)

# RUGBY LEAGUE STADIUMS - AUSTRALIA

QUEENSLAND

CAPACITY : 52,500

CONSTRUCTED : 1914



Queensland is used for regular National State rugby league matches, by one of the top teams.  
The Suncorp Stadium also regularly hosts rugby union Internationals, football and rugby union matches.



[PLAY STADIUM FLYBY](#)



# RUGBY LEAGUE STADIUMS - AUSTRALIA

SYDNEY CENTRAL

CAPACITY : 45,500

CONSTRUCTED : 1988



Sydney Central is used for regular Rugby League matches, by one of the top teams. The Allianz Park Stadium has seen the Sydney Roosters win 13 Premier Championships and 3 World Club Challenges.



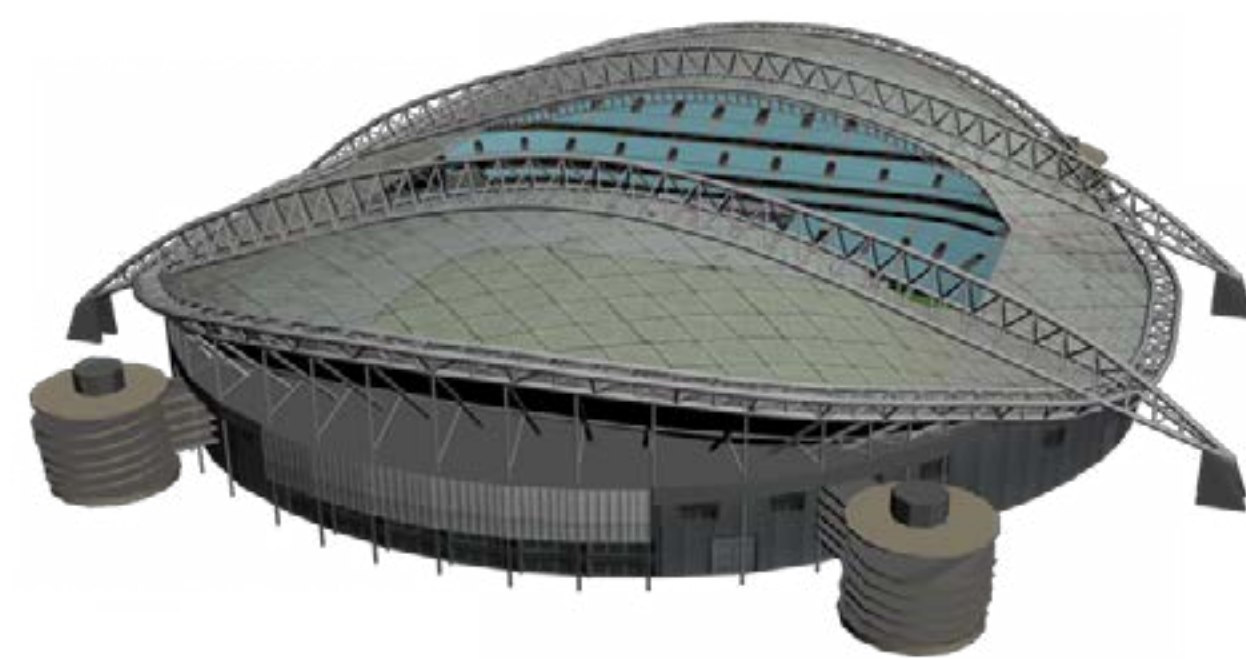
[PLAY STADIUM FLYBY](#)

# RUGBY LEAGUE STADIUMS - AUSTRALIA

SYDNEY EAST

CAPACITY : 83,500

CONSTRUCTED : 1999



Sydney East is used for regular Rugby League matches, by one of the top teams.  
Stadium Australia has hosted the 2000 Olympics, the Australian National rugby union team, ARF and football matches.



[PLAY STADIUM FLYBY](#)

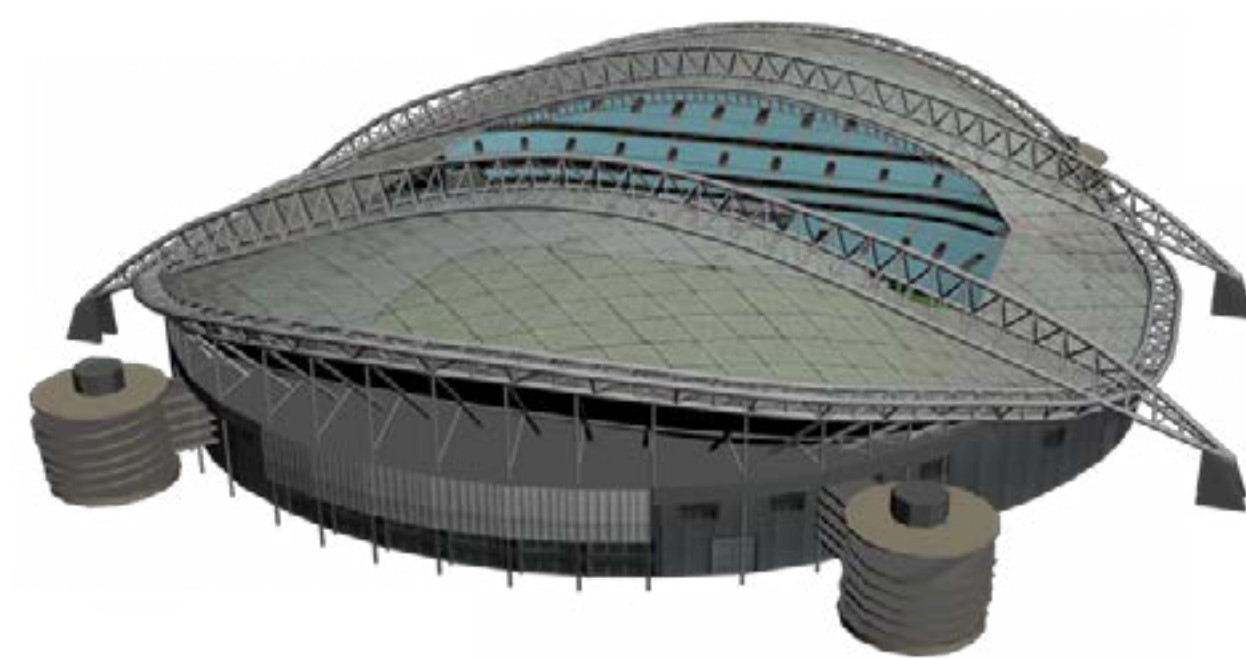


# RUGBY LEAGUE STADIUMS - AUSTRALIA

SYDNEY NORTH

CAPACITY : 83,500

CONSTRUCTED : 1999



Sydney North is used for regular Rugby League matches, by one of the top teams.  
Stadium Australia has hosted the 2000 Olympics, the Australian National rugby union team, ARF and football matches.



[PLAY STADIUM FLYBY](#)

# RUGBY LEAGUE STADIUMS - AUSTRALIA

SYDNEY SOUTH

CAPACITY : 48,000

CONSTRUCTED : 1854



Sydney South is used for the National Rugby League Finals, by the top two teams in the League.  
The Sydney Cricket Ground, is most famous for Australian International and state cricket matches.



[PLAY STADIUM FLYBY](#)

# RUGBY LEAGUE STADIUMS - AUSTRALIA

SYDNEY WEST

CAPACITY : 20,741

CONSTRUCTED : 1986



Sydney West is used for regular rugby league matches, by one of the best teams in the league.  
Located in a district of Sydney, the Parramatta Stadium also hosts football matches and concerts.



[PLAY STADIUM FLYBY](#)